

BIL Manage Invest

YOUR TAILORED ONE-STOP SOLUTION
FOR YOUR INVESTMENT FUND NEEDS





Introducing BIL Manage Invest S.A.

BIL Manage Invest S.A. (BMI) provides a flexible and tailored one-stop solution for Investment Managers looking for a single point of contact for the management of their fund structures in Luxembourg. BMI seamlessly integrates into the investment management process and operating model of its clients, providing the capital, substance and infrastructure required to satisfy regulatory requirements.

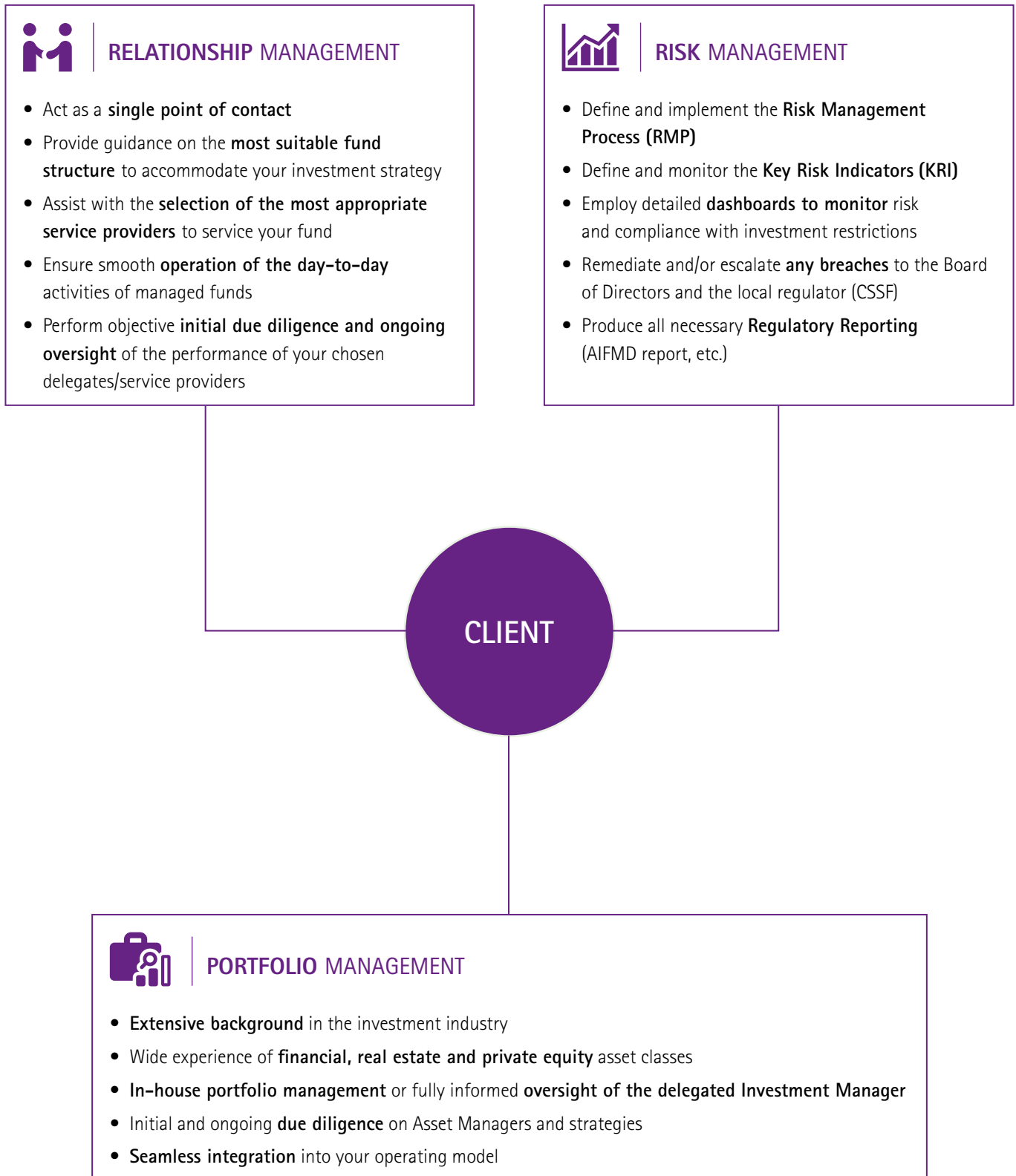
BMI is backed by the oldest multi-business bank in the Grand Duchy, **Banque Internationale à Luxembourg (BIL)**, with branches in Europe and Asia.

BMI is authorised in Luxembourg to manage AIFs and UCITS funds with the following investment strategies:

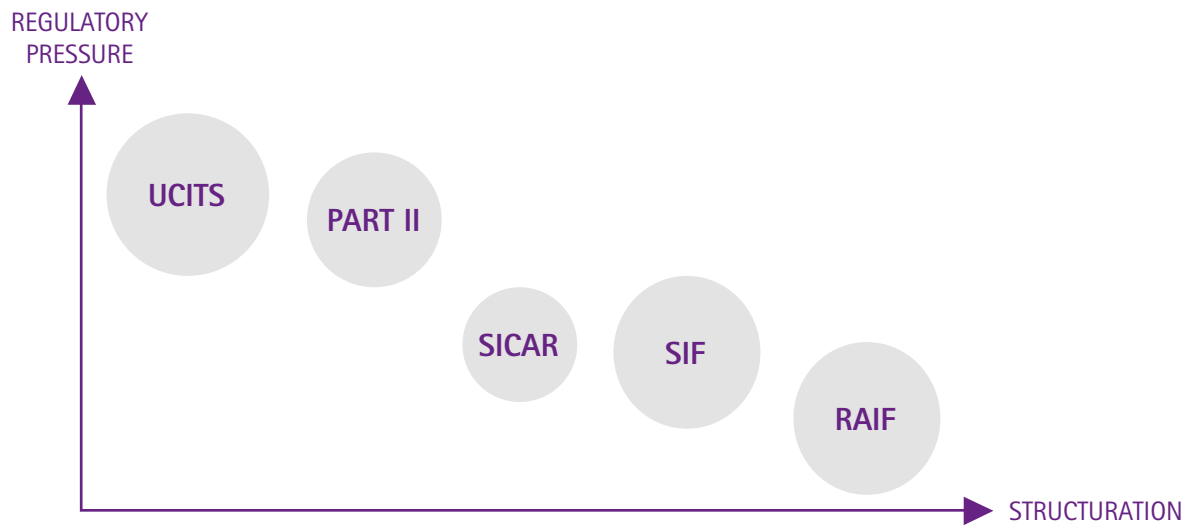
- Private Equity and Real Estate Funds
- Infrastructure Funds
- Fund of Funds
- Equity and Fixed Income Funds
- Private Debt/Loans

BIL Manage Invest S.A. in a few words

A dedicated team of experienced investment professionals



Product & Regime Overview of the funds we manage



UCITS

- Only transferable securities
- Diversification requirements
- Open to all investors
- Very high level of regulation

PART II

- All asset classes
- Not open to all investors
- Medium level of regulation

SICAR

- Risk capital only
- Qualified investors only
- No diversification requirements
- Low level of regulation

SIF

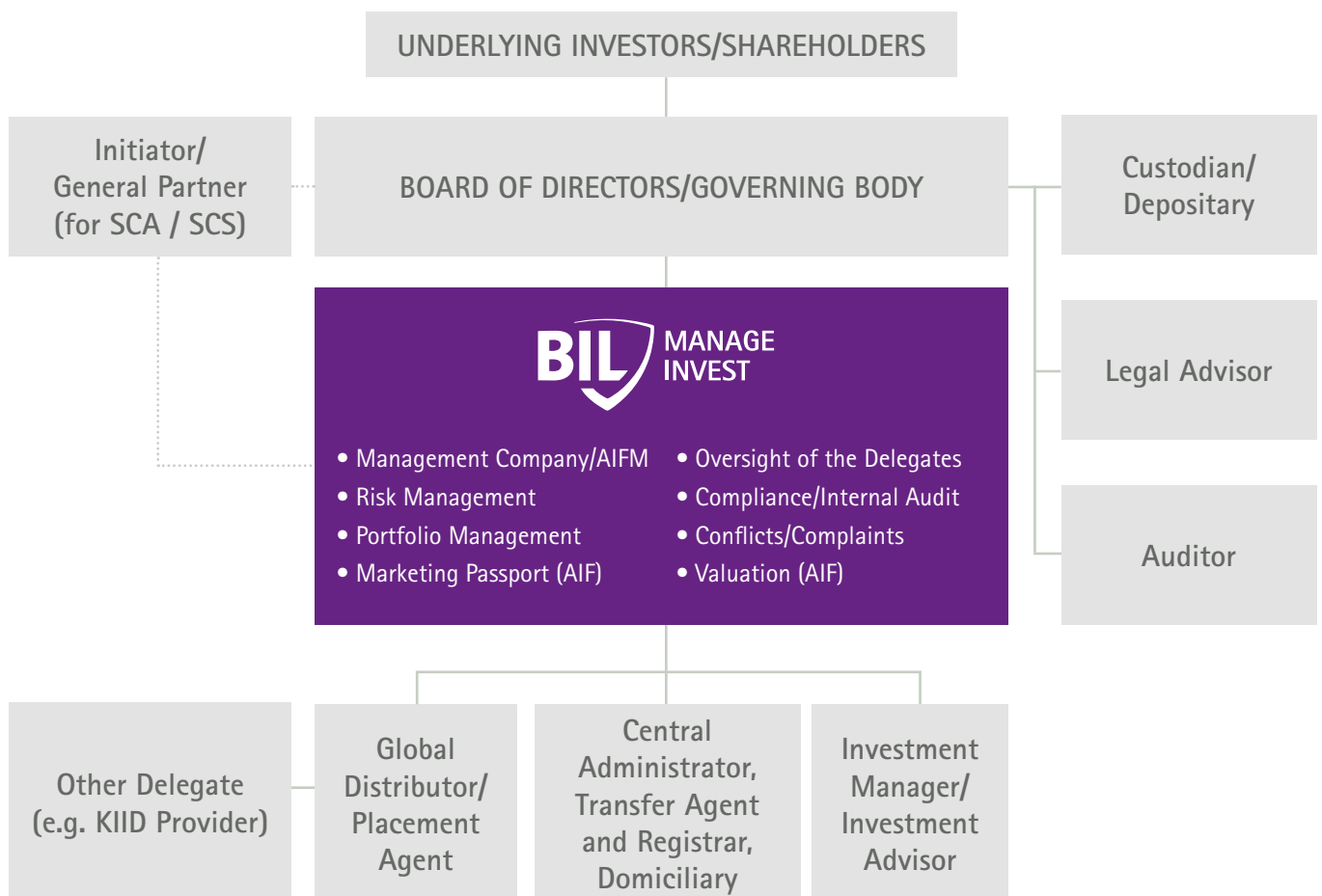
- All asset classes
- Well-informed investors only
- Low diversification requirements
- Low level of regulation

RAIF

- All asset classes
- Well-informed investors only
- Low diversification requirements
- No direct supervision



Typical structure of UCITS or AIF in Luxembourg





Our offer in a few words

Structuring and servicing your Investment Fund needs



YOUR SINGLE POINT OF CONTACT

- Structuring and set-up of new investment vehicles
- Portfolio Management across different asset classes when required
- Risk Management and investment restriction monitoring
- Initial and ongoing due diligence of the chosen service providers
- Relationship Management and follow-up of the whole life cycle of the fund



STRUCTURING AND SERVICING

Fully licensed by the Luxembourg Regulator (CSSF) to provide:

- Management Company services to UCITS Funds
- Alternative Investment Fund Manager services under the Alternative Investment Fund Managers Directive (AIFMD)

We offer:

- One-stop-shop solution as a regulatory hub in Luxembourg
- Day-to-day management of the funds we manage
- Time to our clients, allowing them to concentrate on their core business and grow their assets



WHAT MAKES US DIFFERENT

- Independent, open architecture approach (no mandatory providers)
- Backing of the oldest private bank in Luxembourg, Banque Internationale à Luxembourg S.A.
- Staffed by Investment Management professionals, enabling us to act as the Portfolio Manager, if required
- Full structuring process and seamless integration with your existing operating model



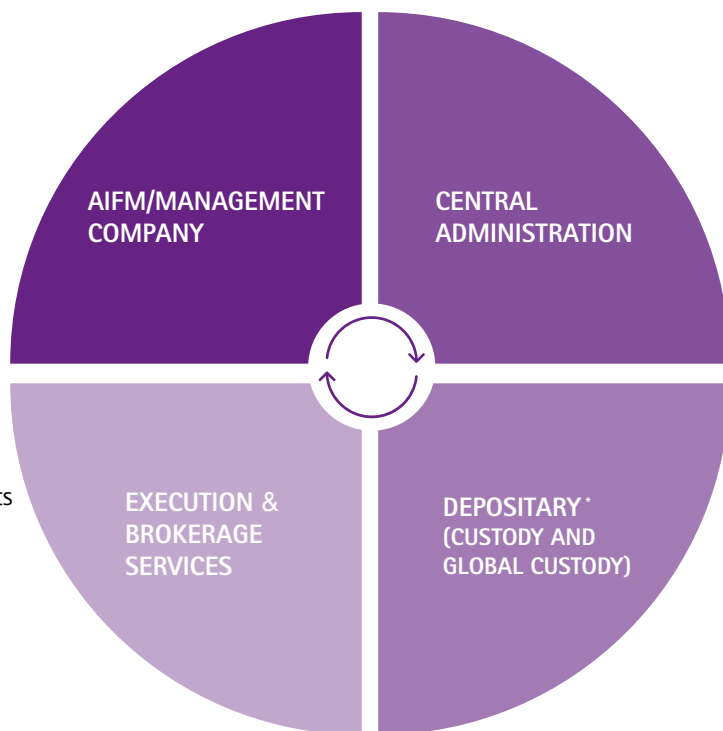
Our Platforms - "Rent a compartment Model"

DESCRIPTION	ALTERNATIVE VEHICLE	TRADITIONAL VEHICLE
Product Name	Private II Wealth Management SCA-SIF	Lux Multimanager SICAV
Registered Office	42, rue de la Vallée L-2661 Luxembourg	11-13 Boulevard de la Foire L-1528 Luxembourg
Law	2007 Law (SIF)	Part I of the 2010 Law (UCITS)
Custodian	Banque Internationale à Luxembourg S.A.	RBC Investor Services Bank S.A.
Central Administrative, Domiciliary and Corporate, Registrar and Transfer Agent	European Fund Administration S.A.	RBC Investor Services Bank S.A.
Auditors	PWC (PricewaterhouseCoopers, Société cooperative)	PWC (PricewaterhouseCoopers, Société cooperative)
Target "rentors"	Institutional investors/Professional investors	Asset Managers/Institutional investors/Professional investors
Scope of investors	Well-informed investors only	No restrictions as to the type of investors
Strategies/Target Investments	Real Estate/Private Equity/Financial assets with alternative strategies/Infrastructure/Private Debt	Liquid assets, long-only strategies with risk diversification requirements
Minimum NAV frequency	Yearly	Bi-monthly
Expected Timing to launch	Time to market shorter than for a standalone structure	Time to market shorter than for a standalone structure



Our fully integrated supply chain offer/360° services

- Fund Structuring
- Portfolio Management
- Risk Management
- Product Management



- Transfer Agency
- Fund Accounting
- Administration
- Corporate Services

We let you select your Central Administration. We are already linked with 6 of the major Central Administrators in Luxembourg

- Bonds & Equities
- Derivatives
- ETF & Structured products
- Forex and Funds



- Wide range of asset classes
- Network of sub-custodians
- Asset safety

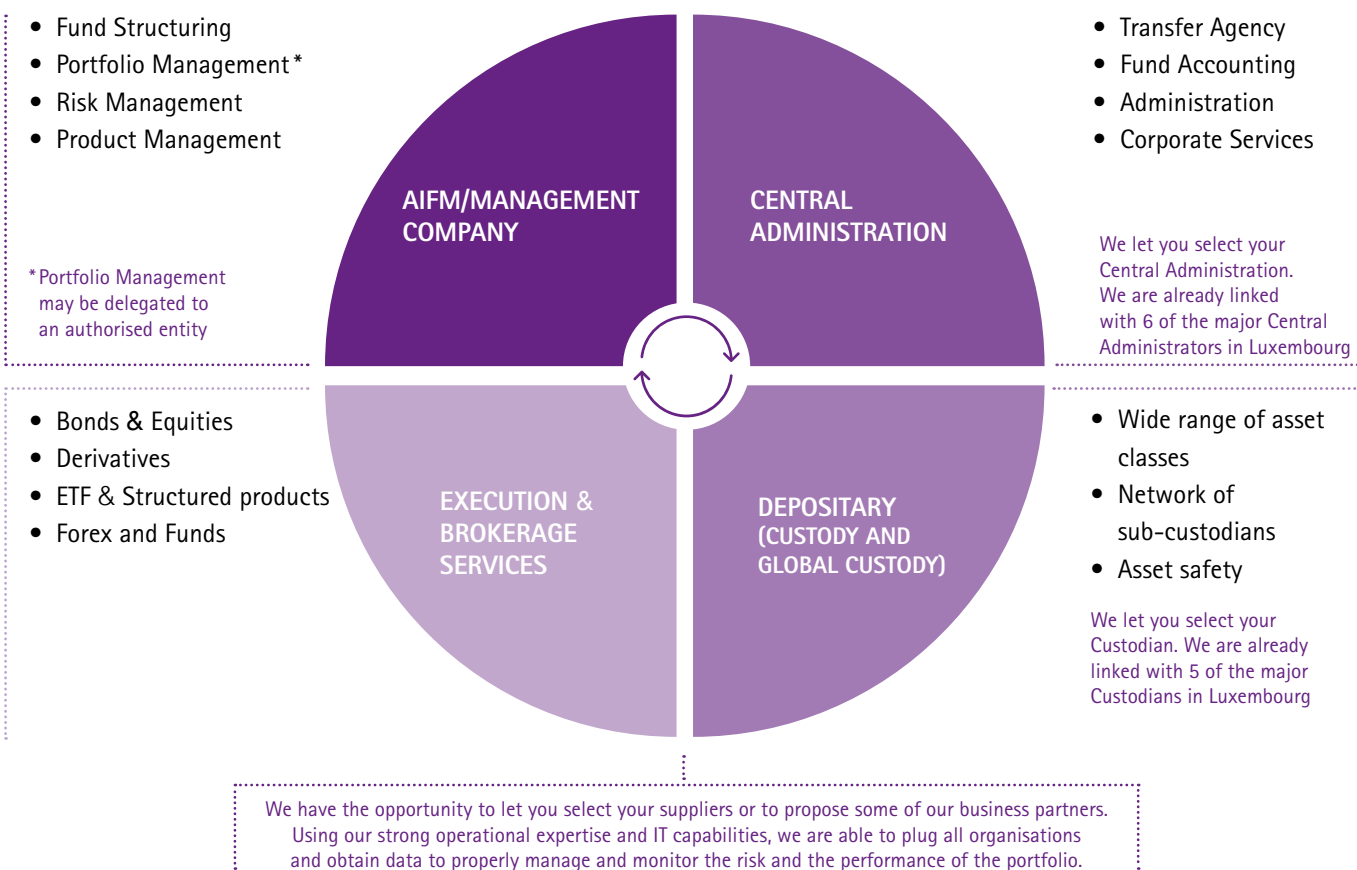


* Alternative funds only



Our Open Architecture Model

Under certain circumstances and depending on the product characteristics, we may adopt an open architecture where some of the activities are delegated to external providers outside the BIL Group.



Our Values

PARTNERSHIP INSTEAD OF COMMERCIAL RELATIONSHIP

- Long-term strategy to grow together with our clients
- No tactical considerations in our way of working, and objective of low but strong growth

TRANSPARENCY

- We explain what we do, and why we do it
- Our processes are tailored to ensure full transparency on all activities

COMMITMENT

- The Teams are dedicated to serving clients in a professional and timely manner
- The delay in handling your demands and fixing your issues is extremely short

INDEPENDENCE

- Our strong governance allows us to take decisions quickly and in total autonomy
- The decisions are taken with the aim of protecting our clients' interests

DILIGENCE

- We protect the interest of our clients
- We support our clients and help them face regulatory and technical changes and challenges

DO YOU NEED MORE INFORMATION ABOUT
BIL MANAGE INVEST AND OUR SERVICES?

Please contact us at info@bilmanageinvest.com
or on (+352) 272 160 9841

Follow us on 
and visit www.bilmanageinvest.com

The information contained in this document is provided purely for information purposes and may under no circumstances be considered to be legal, accounting, financial or fiscal advice or a recommendation, a guarantee of result, a solicitation to buy or sell any security, product or financial instrument whatsoever. Some or all of the services or products mentioned in this booklet may not be available in your jurisdiction and/or subject to local regulatory requirements, as applicable.

In any event, these statements are valid only at the date of their writing and BMI does not undertake to update them or revise them in the light of new information, future events or other developments. Their publication is not exhaustive or even recent in character. This information is no substitute for the knowledge and competencies of their user, but must be used together with the advice of a qualified professional. This information may originate from external service providers. Unless in the event of deceit or serious misdemeanour, BMI may not be held responsible for the use of this information and of its direct or indirect consequences. The products and services described in this document may not be available in all countries.

BIL Manage Invest S.A.

42, rue de la Vallée • L-2661 Luxembourg

RCS Luxembourg B178.517

T : (+352) 272 160 9841

E : info@bilmanageinvest.com

www.bilmanageinvest.com

