

## About BIL Manage Invest (BMI)

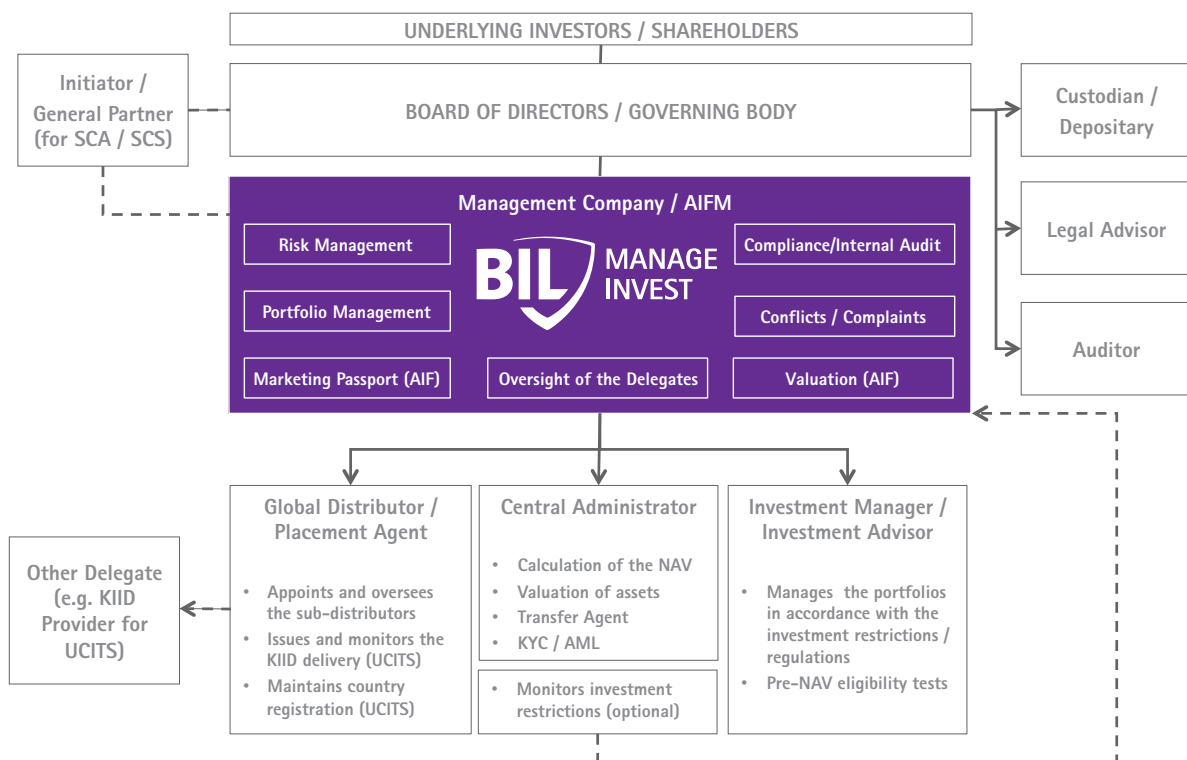
BIL Manage Invest is fully licensed by the Luxembourg Regulator (CSSF) to provide management company services to UCITS Funds and to AIFs under the Alternative Investment Fund Managers Directive (AIFMD).

We offer a **one-stop-shop solution** as a regulatory hub in Luxembourg, assisting clients with the **structuring and set-up** of their investment vehicles, relieving them of much of the regulatory burden. We then perform the **day-to-day management** of the Fund, allowing our clients to concentrate on their core business of managing and growing their assets.

**BIL Manage Invest acts as the single point of contact in Luxembourg for our clients, assuming responsibility for:**

- Structuring and set-up of new investment vehicles
- Portfolio management across different asset classes
- Risk management and investment restriction monitoring
- Initial and ongoing due diligence of the delegated entities
- Product management and oversight of the chosen service providers
- Assistance with fund distribution

## Typical structure for a Luxembourg domiciled fund (UCITS / AIF)



## Structuring and set-up of your investment vehicle

Staffed by a dedicated team of investment and risk management professionals, BIL Manage Invest ("BMI") offers its clients a single point of contact in Luxembourg through which to manage their structures in full compliance with the relevant directives and regulations.

Additionally, BMI is able to assist clients in the structuring and set-up of new investment vehicles, as well as providing support with the distribution of their funds. BMI can provide guidance and support in the selection of the most appropriate fund structure and service providers to suit the investment strategy and operating model of our clients.

## A dedicated team of experienced investment professionals

As clients of BMI, Fund Initiators/Promoters are able to leverage our wide experience and capabilities in the fields of:

- Traditional Financial Assets Funds
- Hedge Funds and Funds of Hedge Funds
- Real Estate Funds
- Private Equity Funds

## Our core teams:

<b>Product Management</b>	Once the fund is established, the Product Management team ensures the smooth operation of the day-to-day activities of your fund, as well as the timely compliance with all regulatory requirements, as your single point of contact with the local service providers.
<b>Portfolio Management</b>	With their extensive investment background, the Portfolio Management team integrates seamlessly within your operating model and collaborates with the investment advisor in order to validate the implementation of your investment strategy.
<b>Risk Management</b>	With an experienced team of risk managers, supported by a comprehensive IT infrastructure, the Risk Management team prepares and implements the Risk Management Process (RMP), monitoring Key Performance Indicators (KPI's) to remediate or escalate any breaches to you.

## Your single point of contact in Luxembourg

As your single point of contact in Luxembourg for the management of your investment vehicle, BIL Manage Invest assures the smooth day-to-day operation of your fund through the ongoing oversight of the delegates, providing:

- A single point of contact in Luxembourg for the day-to-day management of your fund
- Separation of operational and oversight functions
- Objective overview of the performance of your chosen service providers
- Identification, monitoring and mitigation of regulatory and operational risks (including conflicts of interest)
- Local monitoring and communication of evolving regulatory requirements
- Adapting the operating model with reference to best business practices
- Assurance that the best interests of the underlying shareholders are looked after
- Providing comfort to you as Fund Promoter and to the Board of Directors of your fund

## Our key differentiators:

- Backing of the BIL Group, the oldest private bank in Luxembourg with branches in Europe, the Middle East and Asia
- Independent, open architecture approach with the ability to work with any chosen service providers
- Staffed by Investment Management professionals, we can act as the Portfolio Manager ourselves or provide fully informed oversight of the delegated Investment Manager
- Local regulatory hub for your fund acting as your single point of contact in Luxembourg
- Hassle-free structuring and set up of new fund structures and seamless integration with your existing operating model

For more information about our services please visit [www.bilmanageinvest.com](http://www.bilmanageinvest.com) or contact us at [bmi.lu@bil.com](mailto:bmi.lu@bil.com).

BIL Manage Invest S.A.  
42, rue de la Vallée | L-2661 Luxembourg | Tel : +352 272160-9835 | [bmi.lu@bil.com](mailto:bmi.lu@bil.com) | [www.bilmanageinvest.com](http://www.bilmanageinvest.com)

The information contained in this document is provided purely for information purposes and may under no circumstances be considered to be legal, accounting, financial or fiscal advice or a recommendation, a guarantee of result, a solicitation to buy or sell any security, product or financial instrument whatsoever.

In any event, these statements are valid only at the date of their writing and BMI does not undertake to update them or revise them in the light of new information, future events or other developments. Their publication is not exhaustive, precise or even recent in character. This information is no substitute for the knowledge and competencies of their user, but must be used together with the advice of a qualified professional. This information may originate from external service providers. Unless in the event of deceit or serious misdemeanour, BMI may not be held responsible for the use of this information and of its direct or indirect consequences. The products and services described in this document may not be available in all countries.